

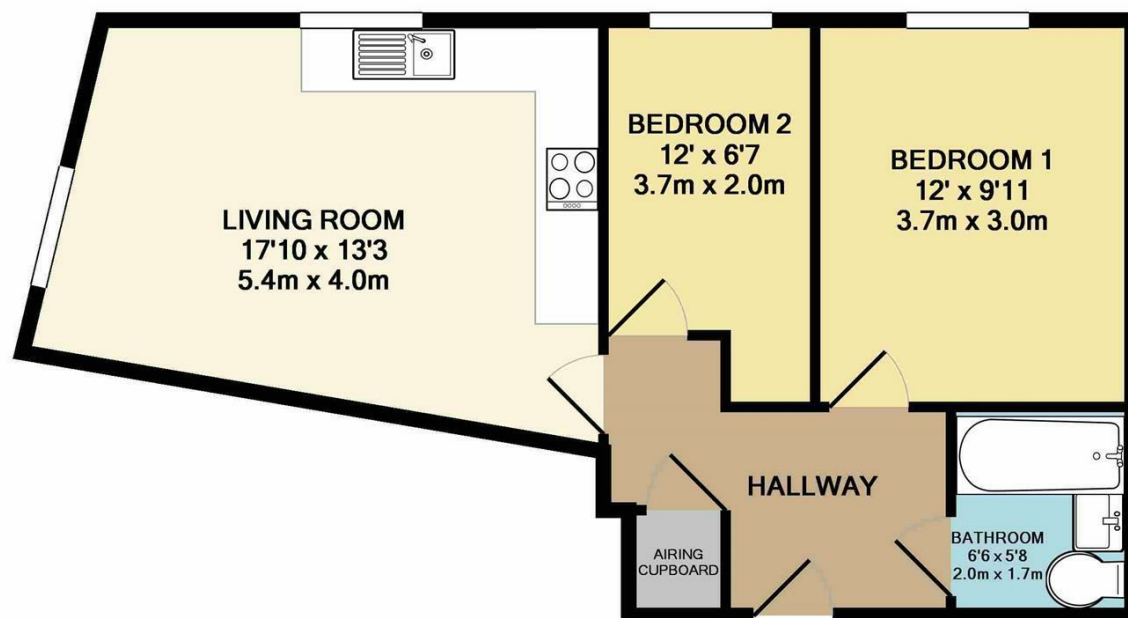


14 HUNTINGDON HOUSE PRINCESS STREET BOLTON, BL1 1EJ

£950 PCM

Second floor two bedroom apartment situated in the Huntingdon House, located just off the popular Bradshawgate, right in the heart of Bolton town centre. The property briefly comprises: open plan lounge, fully fitted kitchen with new appliances, two double bedrooms and a modern bathroom suite. Newly fully furnished to a high standard. Available from 30th April 2025

buckleyfrayne



TOTAL APPROX. FLOOR AREA 505 SQ.FT. (46.9 SQ.M.)

Whilst every attempt has been made to ensure the accuracy of the floor plan contained here, measurements of doors, windows, rooms and any other items are approximate and no responsibility is taken for any error, omission, or mis-statement. This plan is for illustrative purposes only and should be used as such by any prospective purchaser. The services, systems and appliances shown have not been tested and no guarantee as to their operability or efficiency can be given
Made with Metropix ©2017



Energy Efficiency Rating		
	Current	Potential
Very energy efficient - lower running costs		
(92 plus) A		
(81-91) B		
(69-80) C		
(55-68) D		
(39-54) E		
(21-38) F		
(1-20) G		
Not energy efficient - higher running costs		
England & Wales	EU Directive 2002/91/EC	

Agents Note: Whilst every care has been taken to prepare these particulars, they are for guidance purposes only. All measurements are approximate and are for general guidance purposes only and whilst every care has been taken to ensure their accuracy, they should not be relied upon and potential buyers/tenants are advised to recheck the measurements

Manchester Office Lettings
6-14 Great Ancoats Street
Northern Quarter
Manchester
M4 5AZ

0161 236 0004
mark.buckley@buckleyfrayne.co.uk
www.buckleyfrayne.co.uk

buckleyfrayne